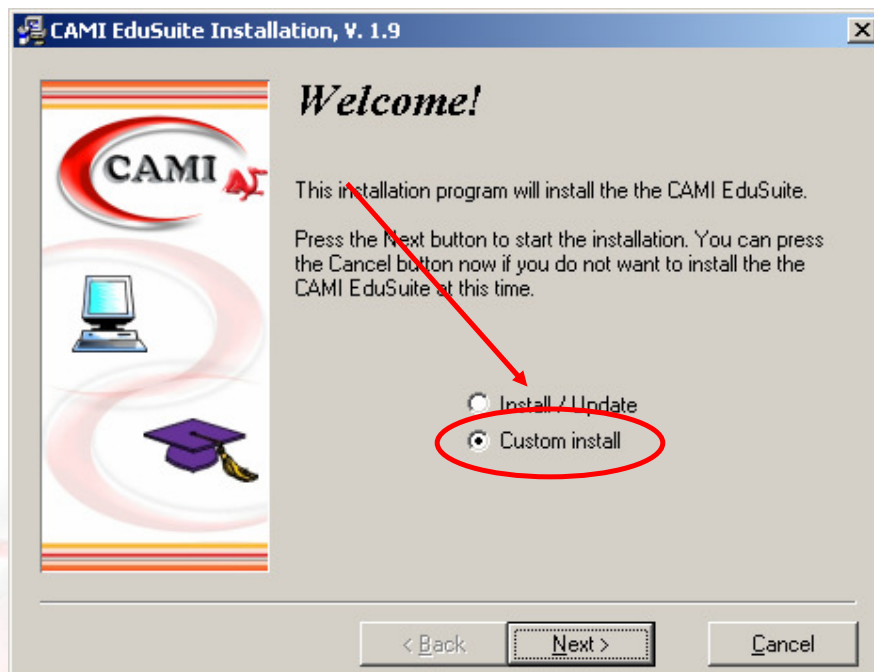


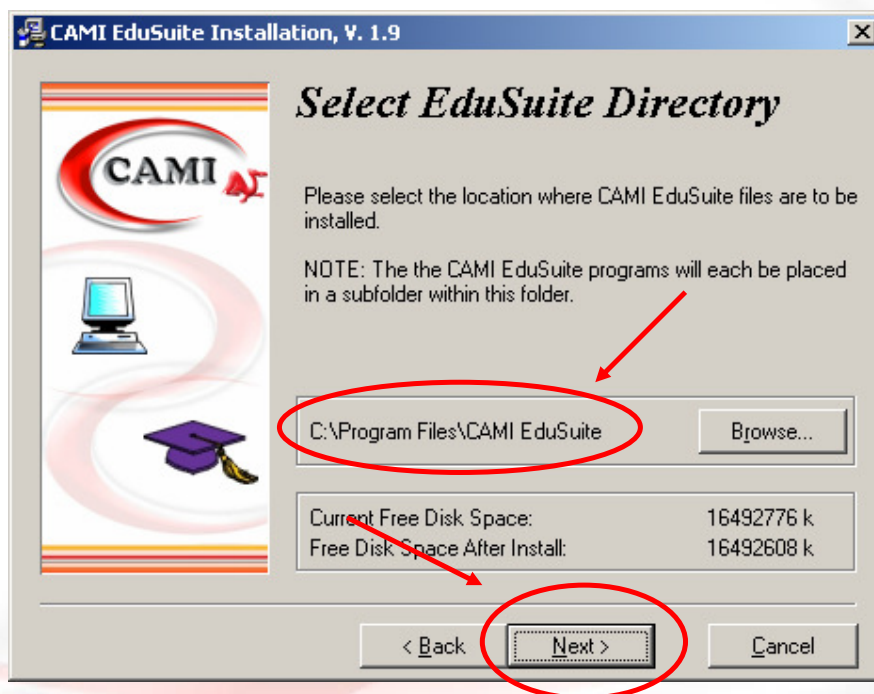


1. Put the CAMI installation disc into the computer drive and then click on **Install/Run** to start the setup initialization wizard.
2. Click on **Custom Install** as indicated below and then click on **Next**.



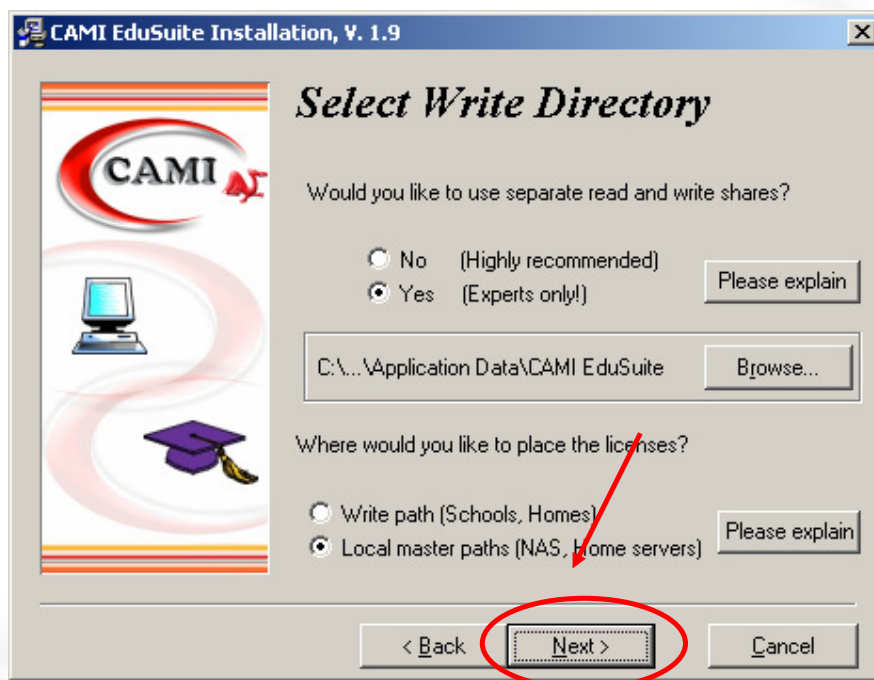


3. Double check the file path directory and then click on **Next** as indicated below.



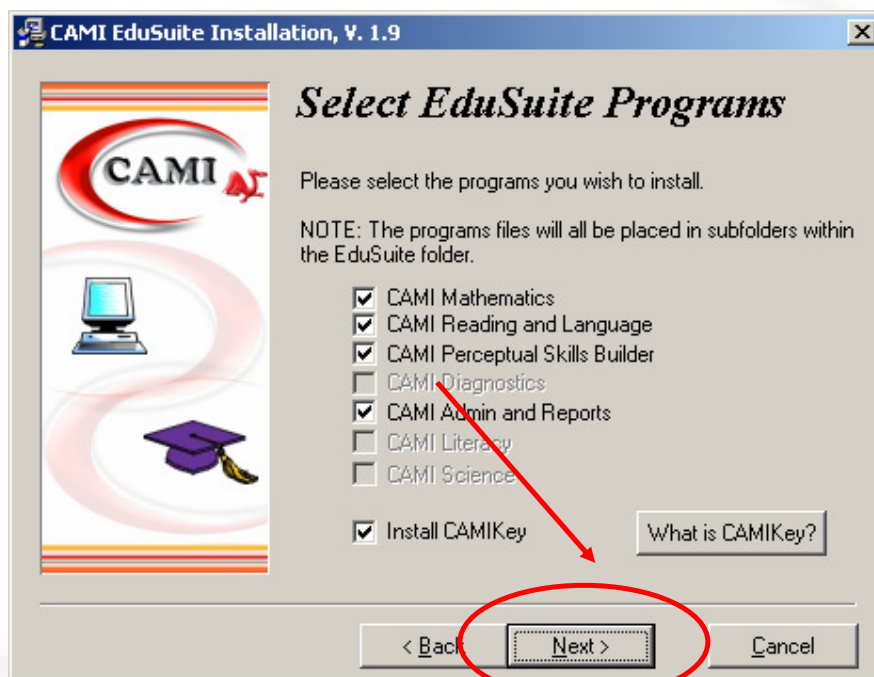


4. If it's a normal home installation simply click on **Next** as indicated below.



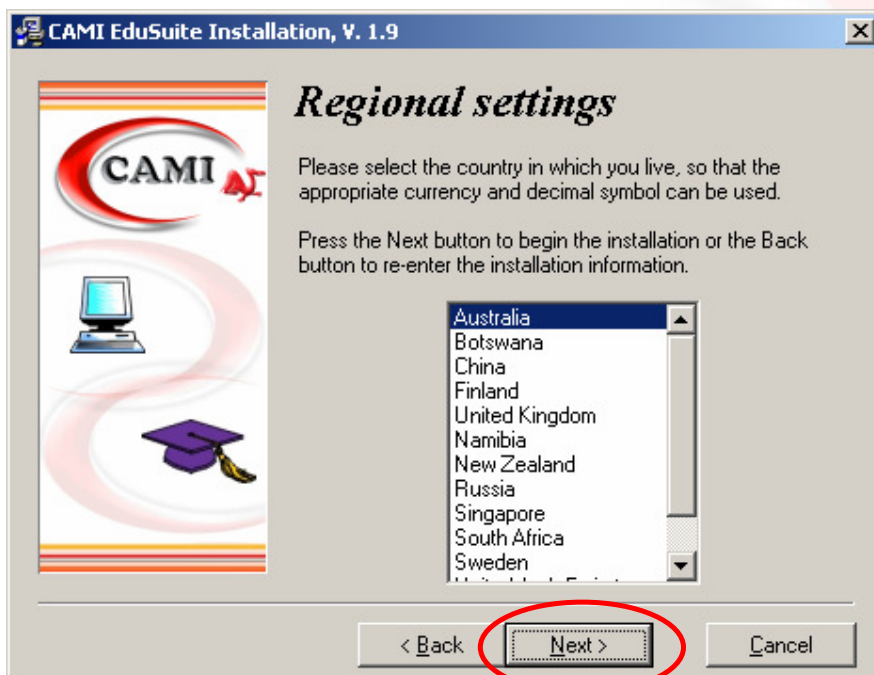


5. Make sure everything's ticked (or whichever applies to you), and then click on **Next**.

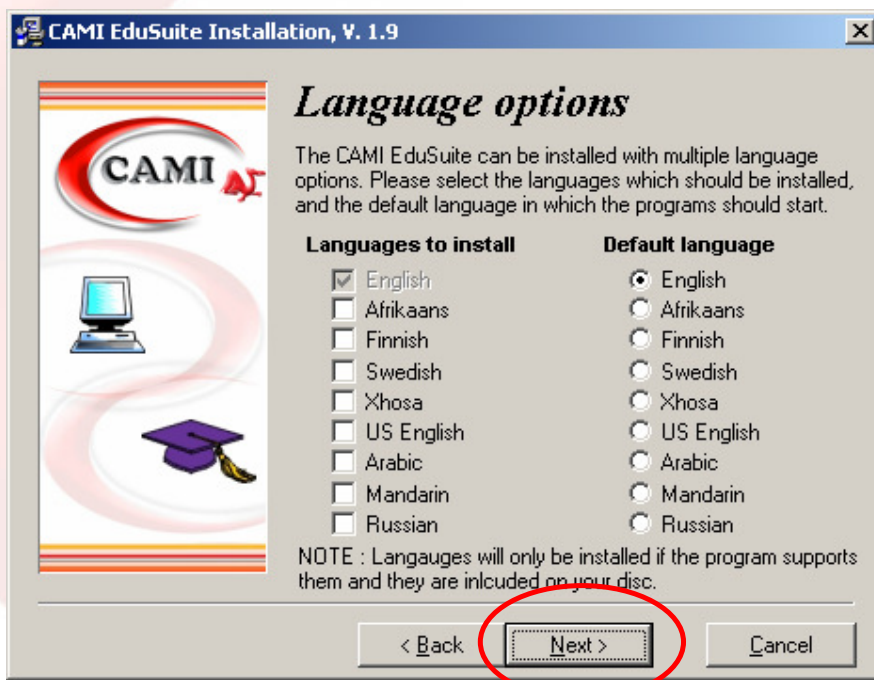




6. Select Australia and then click on **Next**.



7. Make sure English is selected as the default language and then click on **Next**.





8. Click on **Finish** to start installing the program!

