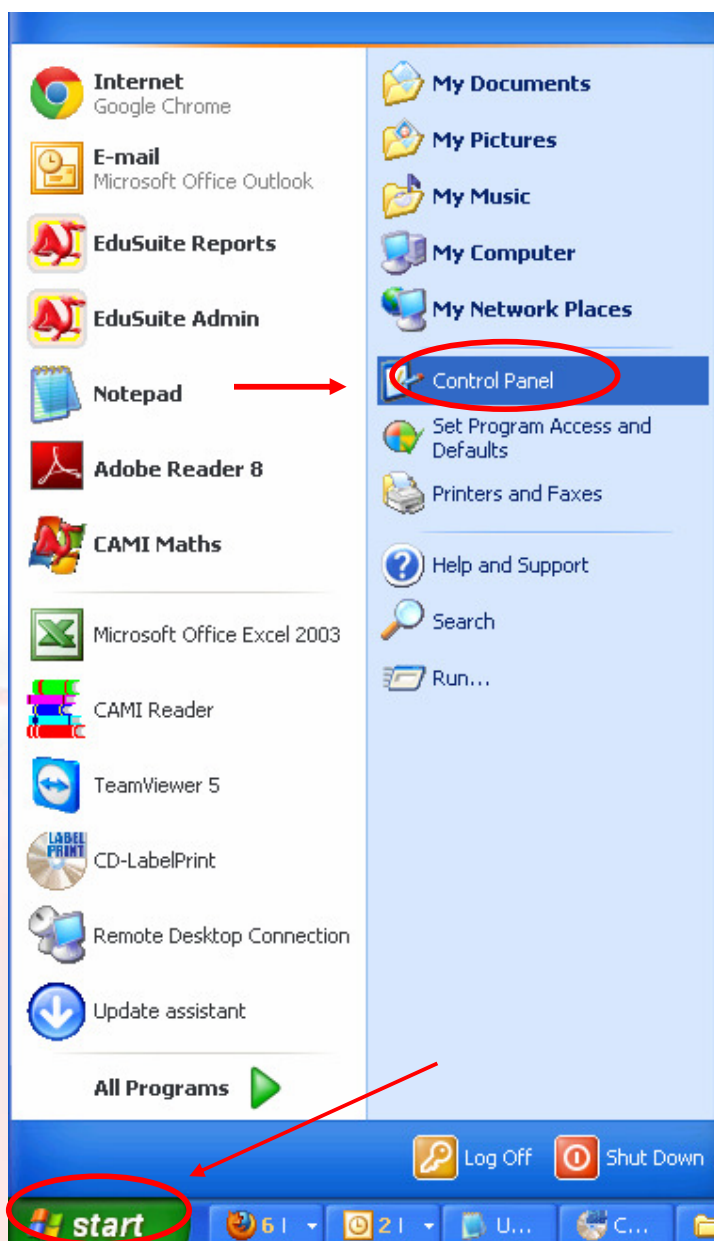
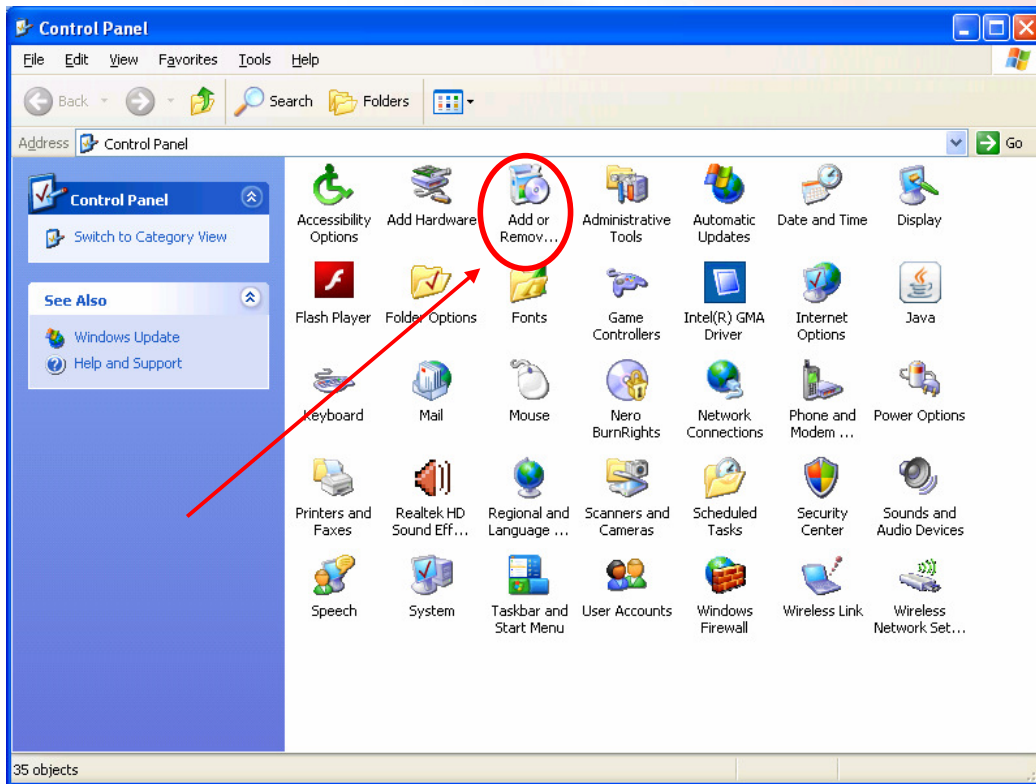


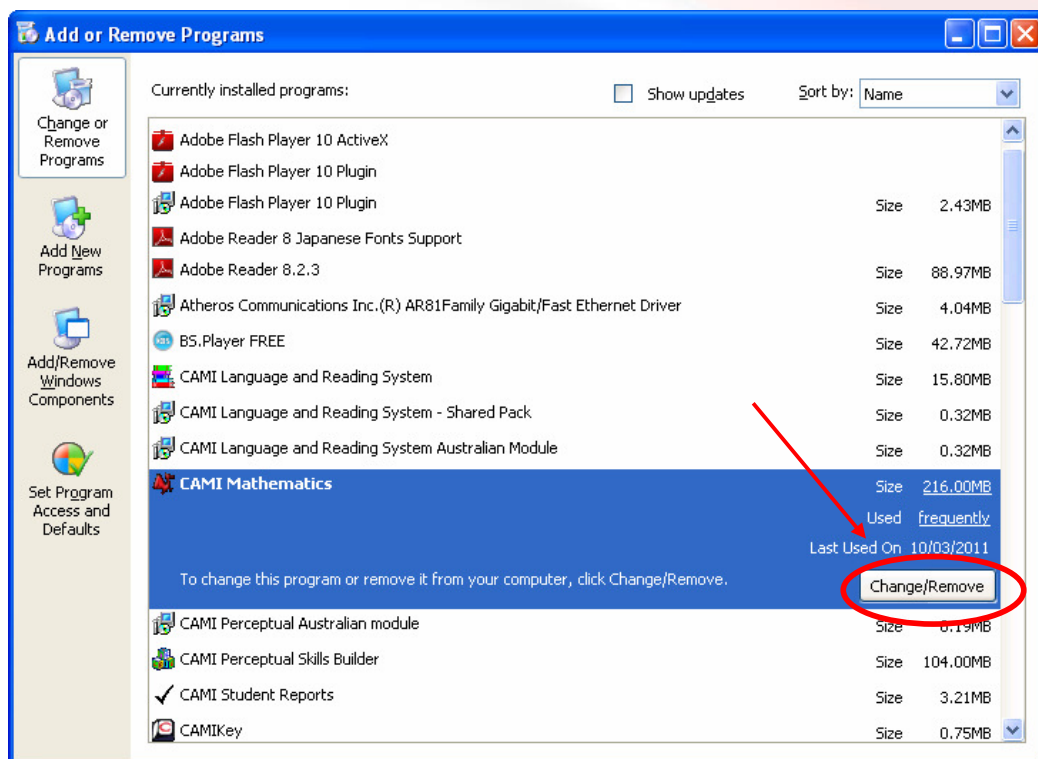


1. Click on the windows **Start Menu** and choose **Control Panel**, the **Start Menu** is located at the bottom left corner of the screen.

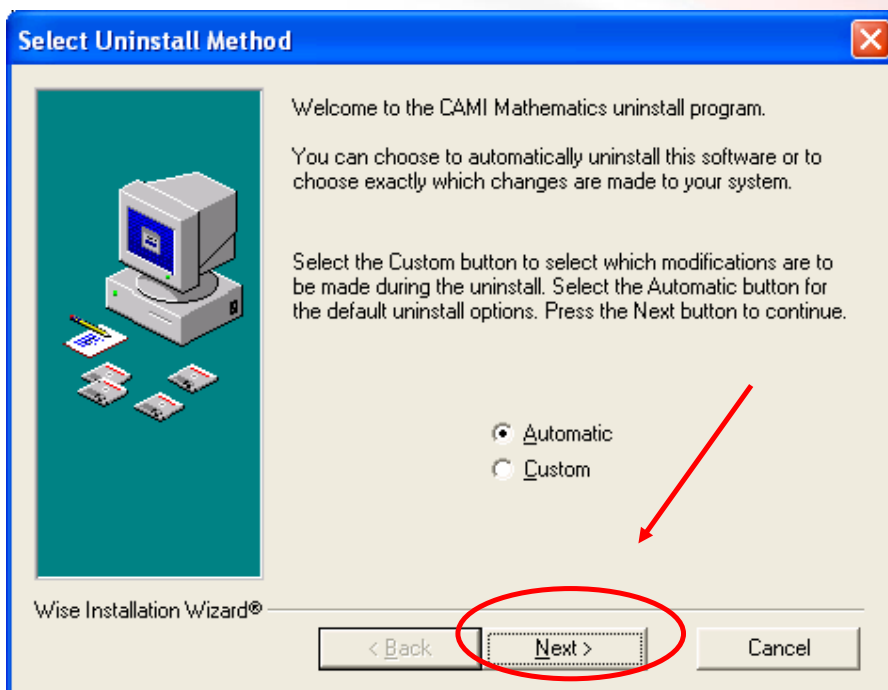




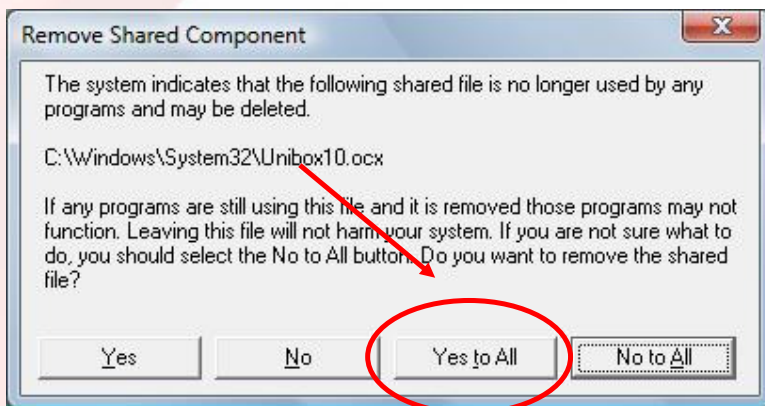
2. Double click on **Add or Remove programs** as shown above in the **Control Panel** window.



3. Once you are in the **Add or Remove Programs** window you will see a list of all the CAMI programs installed on your computer.
4. Click on each CAMI program and then click on **Change/Remove** as shown above to remove each CAMI program. Perform this until ALL CAMI programs have been removed from the computer.



5. When you **remove** a program the above window will appear, simple click on **Next** followed by **Finish** to remove the CAMI program, make sure to click on **Yes To All** when prompting to remove shared components.





6. Once all CAMI programs have been removed, please insert the CAMI disc/s into your computer drive and simply follow the prompts on the screen to install the programs. You can also refer to the detailed instructions on **how to install CAMI programs** on our CAMI website.